



Central Baltic Programme 2014-2020

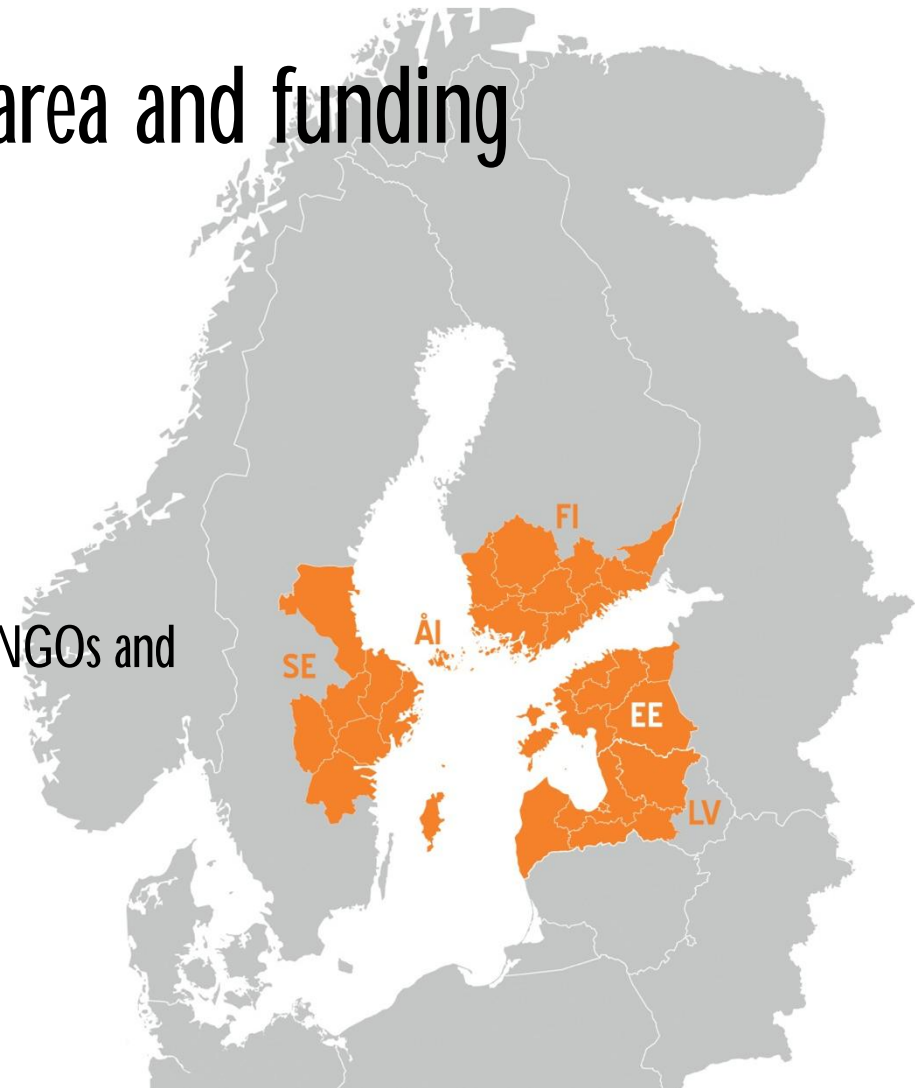
Josefina Bjurström, Information Officer
Central Baltic Contact Point Finland
12.9.2014 | Helsinki

What is INTERREG?

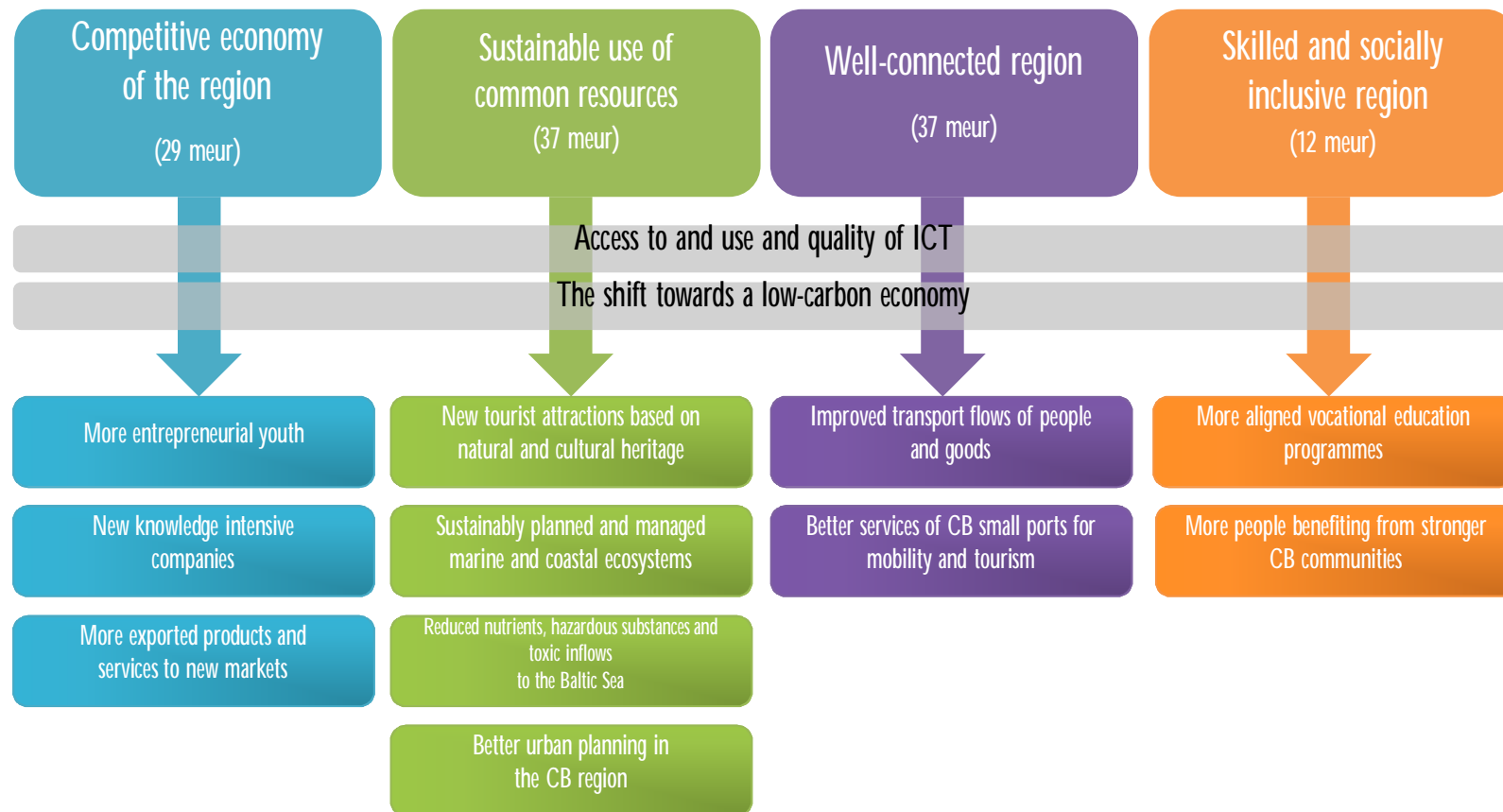
- INTERREG aims at strengthening **cooperation** between regions
- INTERREG projects always have **partners from at least two participating countries**
- INTERREG projects are to have a clear **cross-border added-value**
- INTERREG projects are divided into three different types:
 - Cross-border co-operation
 - Transnational co-operation
 - Interregional co-operation
- The Central Baltic Programme 2014-2020 - a continuation on the Central Baltic INTERREG IV A Programme 2007-2013

Programme area and funding

- 115 million euros available for projects
- Co-financing rates:
 - 75 % in Finland, Åland, Sweden
 - 85 % in Estonia, Latvia
- Project consortia: public organizations, NGOs and private partners



Programme priorities



Competitive economy of the region

More entrepreneurial youth



Use the potential of the young generation to make the region more entrepreneurial.
Promote establishment of student companies and international teams.

New knowledge intensive companies



Achieve creation of new joint Central Baltic enterprises and co-operation between enterprises in the region.

More exports of products and services to new markets



Intensify co-operation in SME clusters in order to enter new markets.
E.g. forestry, tourism, local food or shipbuilding.

Sustainable use of common resources

New tourist attractions based on natural and cultural heritage



Developing cultural and natural resources into joint tourist attractions.

Sustainably planned and managed marine and coastal ecosystems



Addressing joint challenges and issues related to maritime spatial planning of economic zones, territorial waters and integrated coastal zone management.

Reduced nutrients, hazardous substances and toxic inflows to the Baltic Sea



Supporting development and implementation of innovative methods and technologies enhancing the state of the sea.

Better urban planning in the CB region



Targeting challenges and opportunities related to improving urban space.

Well-connected region

Improved transport flows of people and goods



Identifying and targeting challenges related to integration of transport nodes in order to reduce time in transportation of passengers and cargo, reducing CO2 emissions.

Identifying and targeting challenges related to improvement of transport corridors within the CB region.

Better services of CB small ports for mobility and tourism



Improving services of small ports, such as facility services, rescue services and joint marketing.

Skilled and socially inclusive region

More aligned vocational education programmes



Developing and integrating the CB labour market.
Developing and matching of work opportunities and skills.

More people benefiting from stronger CB communities



Targeting practical community and local level social problems related to e.g. health, minorities, safety and gender, through joint educational and training activities.
Strengthening communities via "people to people" projects.

Foci in cross-border cooperation 2014-2020

- Result orientation and sustainability

We intend to achieve a measurable **change** characterized by a difference between the baseline and target values.

Sustainability of **results**

- Strong partnerships

Relevant partners involved

End-users' involvement — sustainability

CB 2007-2013 → 2014-2020

- Thematically more **focused**
- Broadened partner eligibility (public organizations, NGOs and private partners – **partner relevance** important)
- eMonitoring system > **electronic application and reporting** procedures
- Small projects (simplified application procedure, limited max duration and budget)
- Simplifications in project implementation, for instance:
 - Reporting only twice a year
 - Advance payments to be considered
 - Simplified cost options

When will the new programme open?

- Launching the new programme in the autumn with the first call for applications anticipated at the **turn of the year**
- Launch Events: 28.10. Helsinki 4.11. Mariehamn
 5.11. Stockholm 11.11. Riga 12.11. Tallinn
- Draft **Programme Document** available online
- The **Project Database** of the previous programme
- **Consultation on project ideas** with the Joint Secretariat
- Support in **partner search** from the Joint Secretariat + national Contact Points



Thank you.

www.centralbaltic.eu